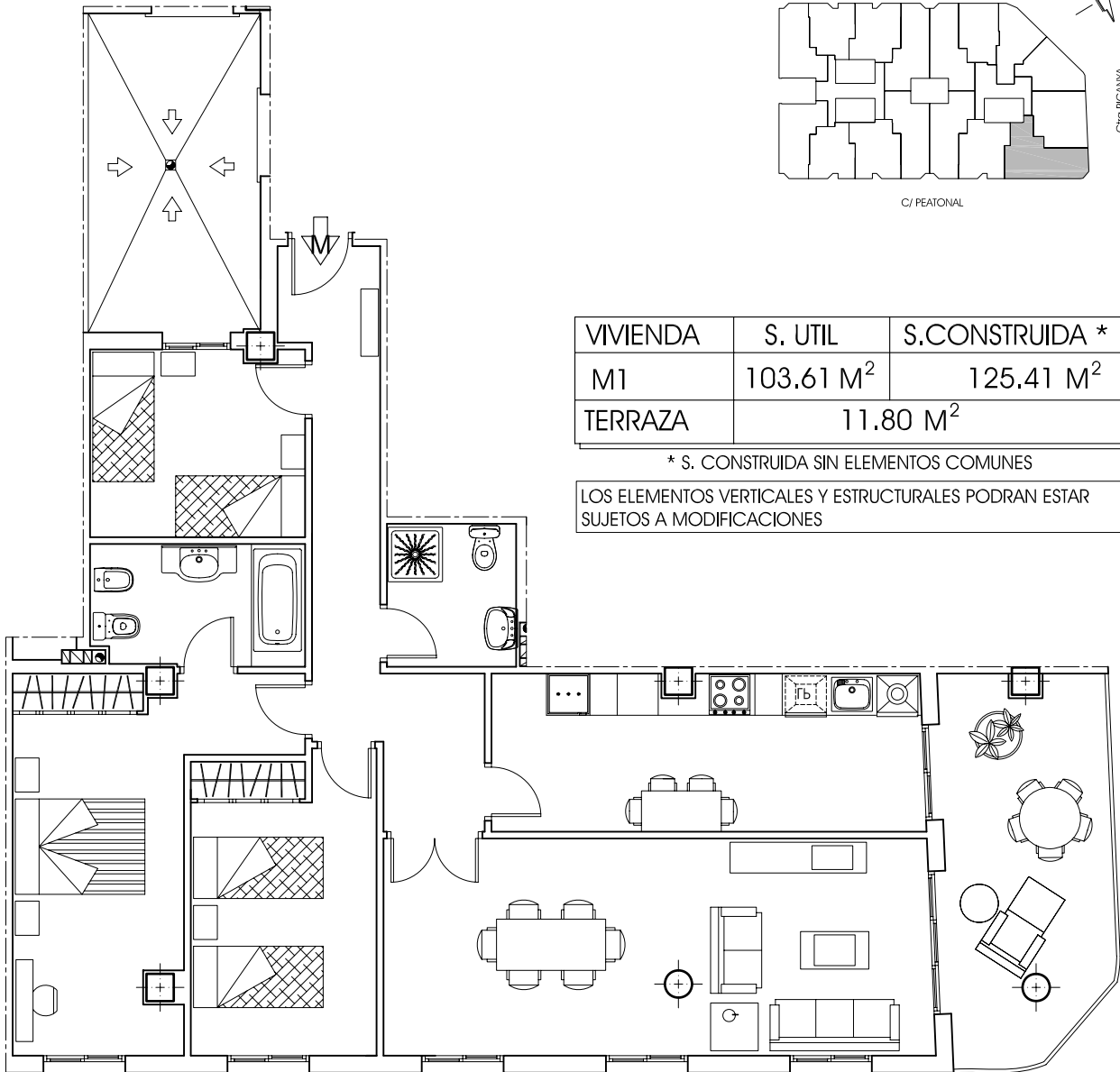
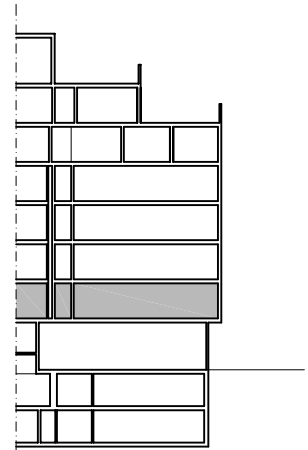
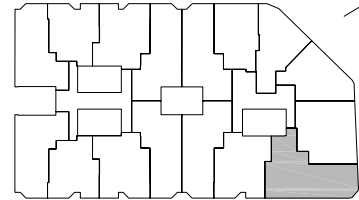


# EDIFICIO "EL MOLINO"



C/ PADRE FELIJO



C/ta PICAYANA

C/ PEATONAL

VIVIENDA	S. UTIL	S.CONSTRUIDA *
M1	103.61 M <sup>2</sup>	125.41 M <sup>2</sup>
TERRAZA	11.80 M <sup>2</sup>	

\* S. CONSTRUIDA SIN ELEMENTOS COMUNES

LOS ELEMENTOS VERTICALES Y ESTRUCTURALES PODRAN ESTAR SUJETOS A MODIFICACIONES